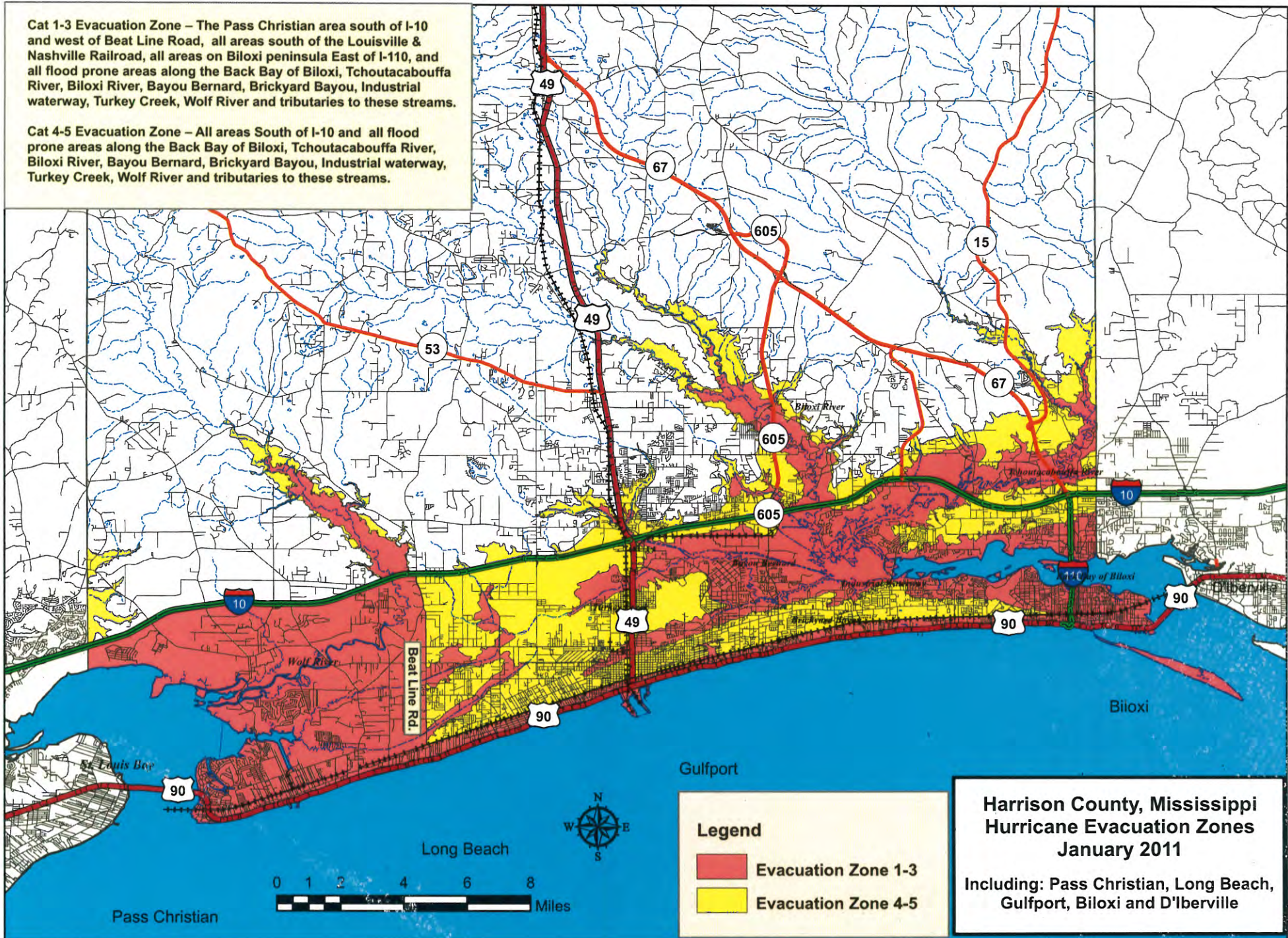


**Cat 1-3 Evacuation Zone** – The Pass Christian area south of I-10 and west of Beat Line Road, all areas south of the Louisville & Nashville Railroad, all areas on Biloxi peninsula East of I-110, and all flood prone areas along the Back Bay of Biloxi, Tchoutacabouffa River, Biloxi River, Bayou Bernard, Brickyard Bayou, Industrial waterway, Turkey Creek, Wolf River and tributaries to these streams.

**Cat 4-5 Evacuation Zone** – All areas South of I-10 and all flood prone areas along the Back Bay of Biloxi, Tchoutacabouffa River, Biloxi River, Bayou Bernard, Brickyard Bayou, Industrial waterway, Turkey Creek, Wolf River and tributaries to these streams.



**Harrison County, Mississippi  
Hurricane Evacuation Zones  
January 2011**

Including: Pass Christian, Long Beach,  
Gulfport, Biloxi and D'Iberville

**Legend**

- Evacuation Zone 1-3
- Evacuation Zone 4-5

0 1 2 4 6 8 Miles

A north arrow is positioned above a scale bar that shows distances from 0 to 8 miles in increments of 2 miles.

Pass Christian

Long Beach

Gulfport

Biloxi

D'Iberville

St. Louis Bay

Wolf River

Beat Line Rd.

49

605

605

605

53

49

67

605

15

67

10

90

90

90

90

90